

A REQUEST FOR PROPOSAL FOR PROFESSIONAL SERVICES CONTRACT

Department of Highways
Professional Services Procurement Bulletin 2022-02
Muhlenberg | 2-8803 | KY-2533

This document constitutes a Request for Proposals for a Professional Service Contract from qualified individuals and organizations to furnish those services as described herein for the Commonwealth of Kentucky, Department of Highways.

I. PROJECT DESCRIPTION

County - Muhlenberg
Route - KY-2533
Item No. - 2-8803.00
Project Description - Straighten the Dean Road intersection of the 189 Bypass to KY 181 north near the intersection with the Western Kentucky Parkway, Wendell Ford National Guard Center, and Job Corp.

II. PROJECT INFORMATION

Project Manager - Jean Jones, P.E.
User Division - Highway Design
Approximate Fee - \$350,000 Preliminary Engineering (Lump Sum)
Project Funding - State Funds (SPP Funds)
Project Length - Approximately 2.023 miles

III. PURPOSE AND NEED

The purpose of this project is to address safety concerns due to narrow lanes and sharp curves. This section of roadway connects KY-181 near the Western KY Parkway to KY-189 near Greenville. KY-2533 is comprised of narrow lanes with little to no shoulder as well as several sharp curves. This project is needed to provide a safe route for residential traffic as well those accessing local businesses and churches.

IV. DBE REQUIREMENT

None

V. SCOPE OF WORK

The selected Consultant will be required to provide engineering services to perform Preliminary Engineering. Preliminary Engineering includes preliminary line and grade plans, traffic engineering analysis as per Design Memo 03-11, preliminary drainage and preliminary structure

design, cost estimates, and gathering any necessary survey for the project area. The selected Consultant may be required to provide

Final Roadway Design, which may be added to the contract agreement by a contract modification when Preliminary Engineering is complete. Final Roadway Design includes, at a minimum, preparation of joint inspection plans, drainage design, Preliminary, Advanced, and Final drainage folders, right-of-way plans, construction plans and post construction Best Management Practices (BMP), signing and pavement marking plans, traffic control plans, final cost estimates, and an anticipated construction schedule. Signal plans may also be required.

VI. SPECIAL INSTRUCTIONS

The Department may retain any of the advertised services to be performed by in-house state forces.

Instructions for Response to Announcement can be found at:

<https://transportation.ky.gov/ProfessionalServices/Pages/Respond-to-an-Announcement.aspx>

VII. AVAILABLE STUDIES

[DNA Study - Hopkins | 2-8803.00 | KY-2533](#)

VIII. METHOD OF DESIGN

The selected Consultant shall utilize the most recent CADD Standards for Highway Plans Policy in the development of the highway plans. Refer to the 2019 CADD Standards for ORD V4 Project Development Memo for information pertaining to the latest CADD Standards and plan submittal.

IX. ENVIRONMENTAL SERVICES

The Department is expected to provide any necessary Environmental Services required for the project.

X. PHOTOGRAMMETRIC SERVICES

The Department will provide LiDAR digital mapping and will furnish manuscripts on computer disks in DGN format. The selected Consultant shall supplement this information with conventional surveying as needed.

XI. STRUCTURE DESIGN

The Department is expected to provide any necessary Structure Design required for the project. However, if structure design is needed when the project advances to Final Design and if the selected Consultant is retained for Final Design services, the selected Consultant shall do the necessary engineering services to submit to the KYTC an Advanced Situation Folder(s) for the appropriate structure(s). The selected Consultant may be responsible for any necessary Structure Design services. Structure Design of the proposed structure(s) may be added as a Contract Modification. Prequalification in the area of Structure Design is not required to be identified in the

Consultant's Response to Announcement. The selected Consultant must obtain the required qualifications before providing these services, or bring a prequalified subconsultant at that time.

XII. GEOTECHNICAL SERVICES

The Department is expected to provide all Geotechnical Services required for the project. Geotechnical services necessary for the completion of Final Design may be added by contract modification at the appropriate time. At any time, if the Department has the capacity to provide these services, the Department may retain the advertised geotechnical services. Prequalification in the area of Geotechnical Services is not required to be identified in the Consultant's Response to Announcement. The selected Consultant must obtain the required qualifications before providing these services, or bring a prequalified subconsultant at that time.

XIII. TRAFFIC ENGINEERING

The Department will provide all traffic projections and related information.

XIV. UTILITIES

The selected Consultant shall provide a project location map to the Department. The Department will send project location maps to all potential utility contacts to determine whether they may have existing utilities within these project limits. The Department will develop the utility contact list. Facility atlas maps received for this project will be provided to the selected Consultant. All utilities including aerial carriers shall be field-verified by the Consultant. Sizes and types of underground and aerial utilities shall be identified on the plans for each alignment alternative in the PL&G submittal.

The Consultant will authorize B.U.D. (Before You Dig) to field-locate utilities during final design. The consultant shall perform field surveys to collect the B.U.D. data. Horizontal location of existing utilities shown on final plans shall be adjusted as necessary to reflect actual B.U.D. locates.

XV. PREQUALIFICATION REQUIREMENTS

To respond to this project the Consultant must be prequalified in the following areas by the response due date of this advertisement:

Roadway Design

- Rural Roadway Design
- Surveying
- Urban Roadway Design

Geotechnical Services (please see note below)

- *Geotechnical Engineering**
- *Geotechnical Drilling**
- *Geotechnical Laboratory Testing**

Structure Design (please see note below)

- *Spans Under 500 Feet**

Utility Design (please see note below)

- *Utility Preconstruction Coordination**

** Note – Structure Design, Geotechnical Services, and Utility Design prequalifications are not required with the initial proposal as it is uncertain to the extent practicable if they are necessary. Should these services become necessary during the delivery of the project in this or future phases, the selected Consultant team must obtain the required qualifications before providing those services, or bring on a prequalified subconsultant at that time.*

XVI. PROCUREMENT SCHEDULE

Dates other than Response Date are tentative and provided for information only.

- Advertisement Date: August 10, 2021
- Response Date: September 1, 2021 by 4:30 PM ET (Frankfort Time)
- First Selection: September 7, 2021
- Final Selection: September 22, 2021
- Pre-Design Conference: September 29, 2021
- Consultant Fee Proposal: October 8, 2021
- Contract Negotiations: October 20, 2021
- Notice To Proceed: November 10, 2021

XVII. PROJECT SCHEDULE

- Alignment Review – March 2022
- Preliminary Line and Grade – June 2022

XVIII. EVALUATION FACTORS

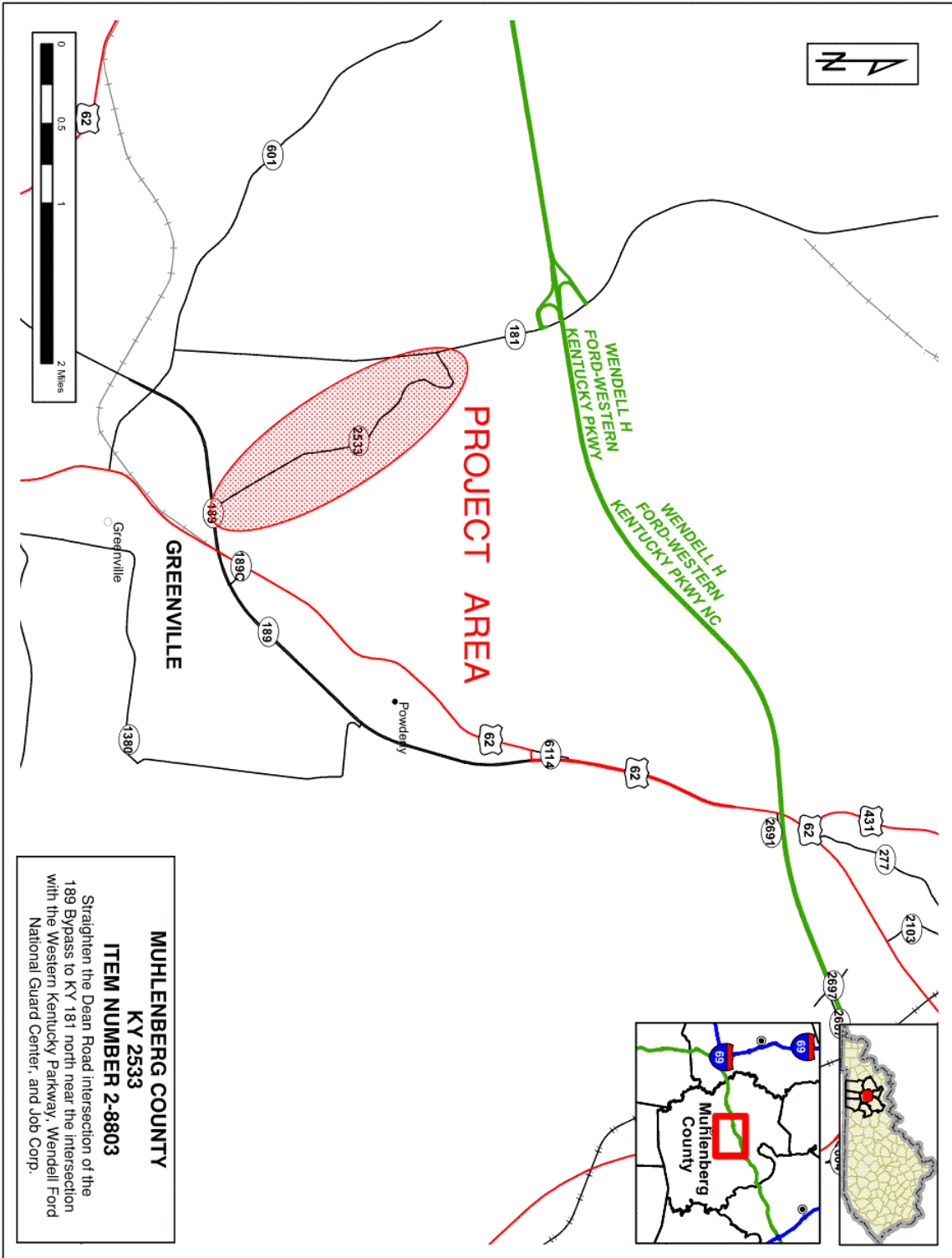
Consultants will be evaluated by the selection committee based on the following, weighted factors:

1. Project approach and proposed procedures to accomplish the services for the project. (30 Points)
2. Relative experience of consultant personnel assigned to project team with highway project for KYTC and/or federal, local or other state governmental agencies. (10 Points)
3. Past record of performance on projects similar in type and complexity. (10 Points)
4. Capacity to comply with project schedule. (10 Points)
5. Knowledge of the locality and familiarity of the general geographic area. (2 Points)

XIX. SELECTION COMMITTEE MEMBERS

1. Renee Boucherie, P.E., User Division
2. Tonya Higdon, P.E., User Division
3. Erika Drury, P.E., Secretary's Pool
4. Larry Krueger, P.E., Secretary's Pool
5. Cindy Evensen, Governor's Pool

XX. AREA MAP



Disclaimer: KYTC provides this map as a reference only. Users are to validate information independently.
 Copyright: 2021 Kentucky Transportation Cabinet. All rights reserved.

Date: 7/29/2021

